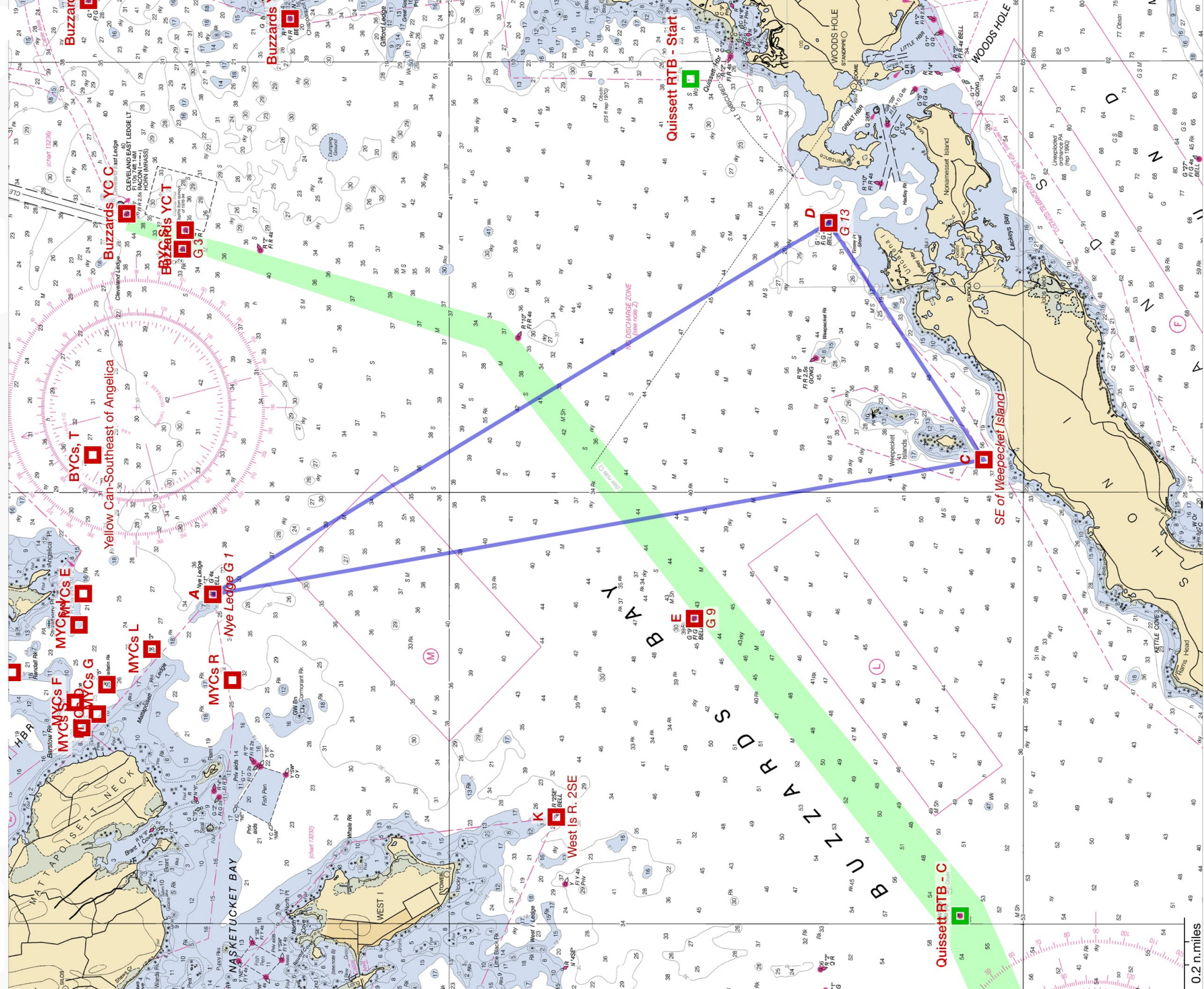


MYC's Round the Bay Race

Course V - A-D-C-A 15.5nm

Start and Finish @ A - Nye Legde G "1"

'Reverse' Course RV - A-C-D-A

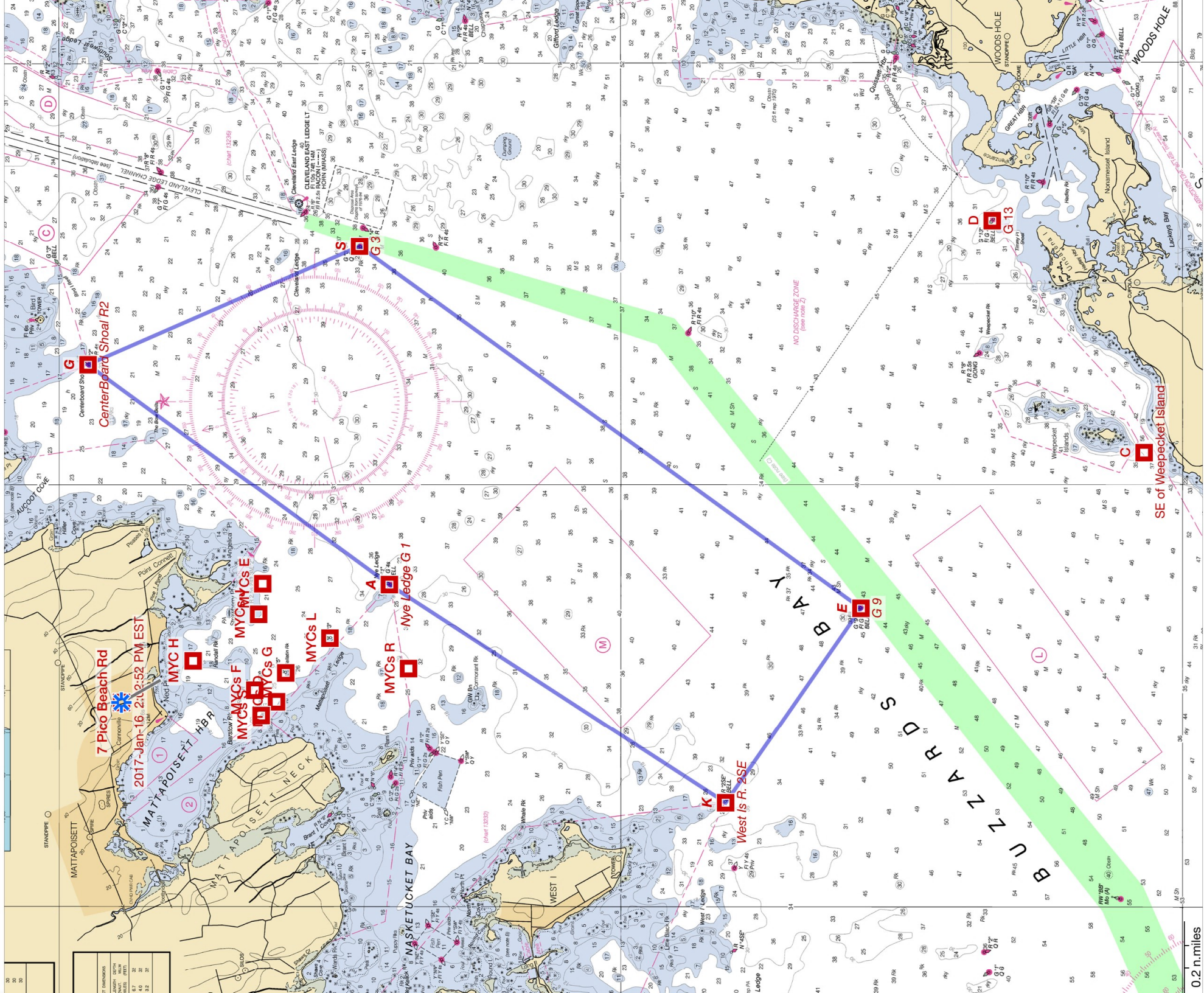


MYCs Round the Bay Race

Course W - A-K-E-S-G-A 17.1nm

Start & Finish @ 'A - Nye Lege G 1'

'Reverse' Course RW - A-G-S-E-K-A

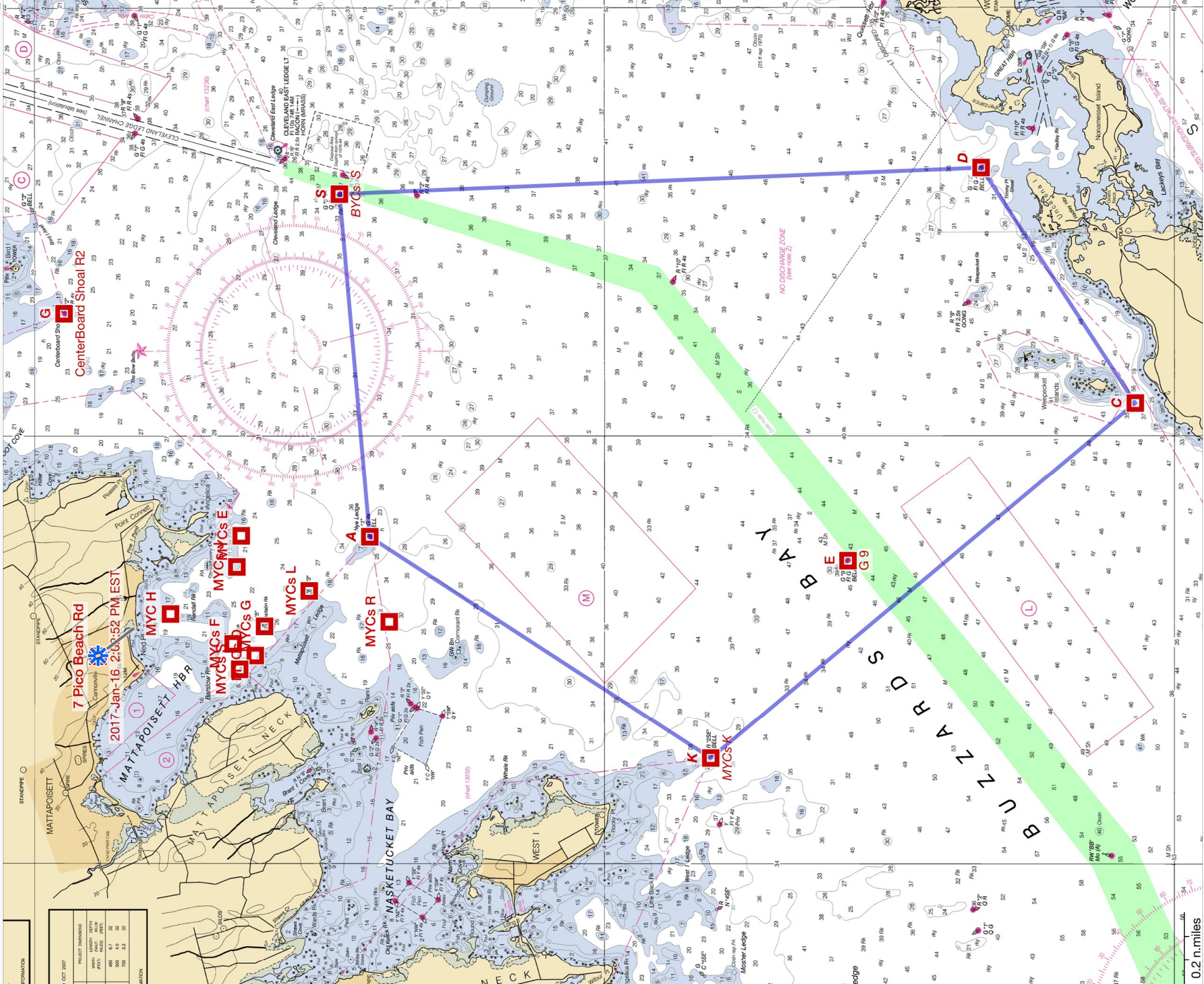


MYC's Round the Bay Race

Course X - A-K-C-D-S-A 19.5nm

Start & Finish @ A - Nye Ledge G"1"

'Reverse' Course RX - A-S-D-C-K-A

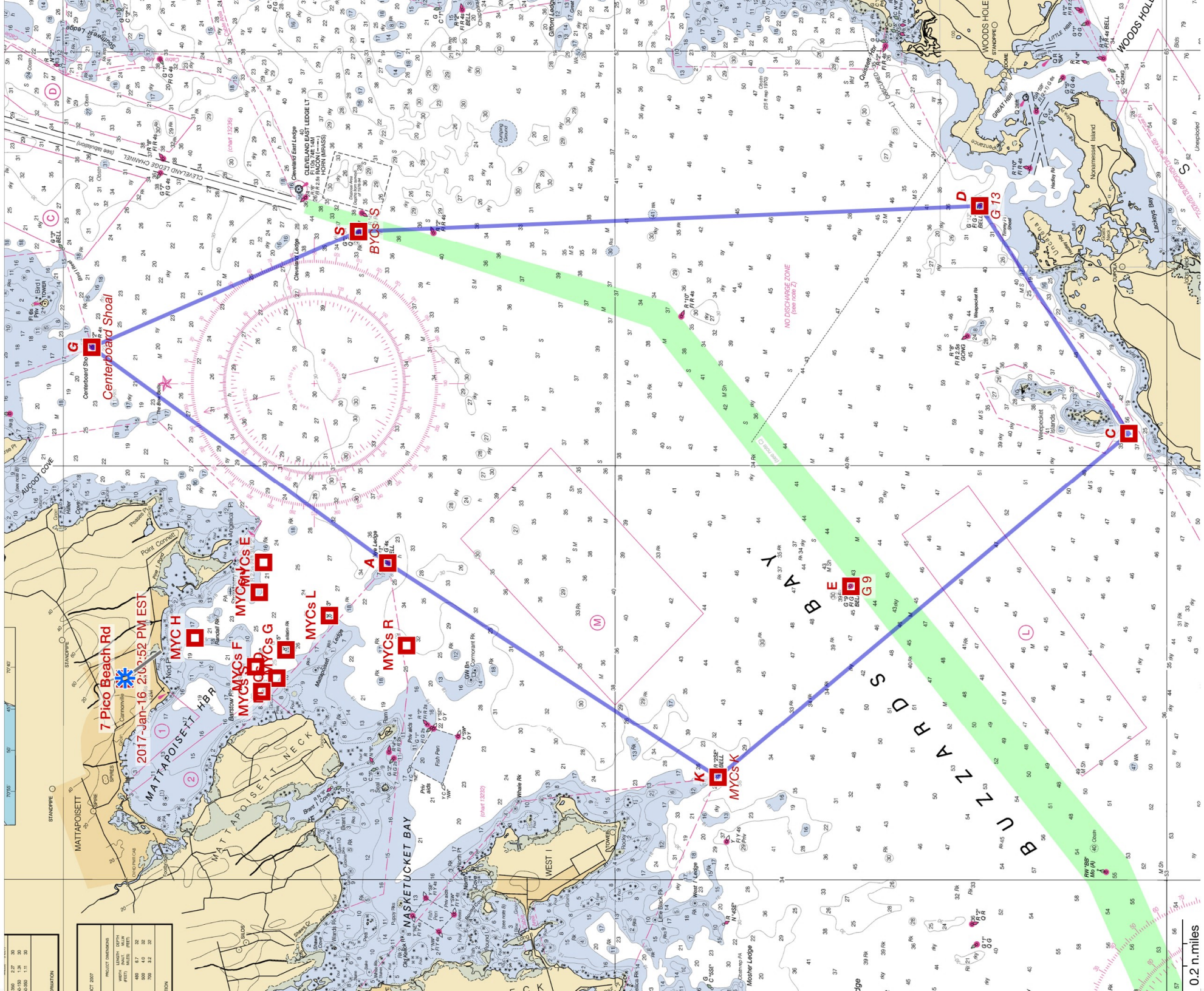


OCT 2007	
PROJECT INFORMATION	
PROJECT NAME	DATE
7 Pico Beach Rd	2017-Jan-16 2:00:52 PM EST
400 4.0 32	
500 4.0 32	
700 5.0 32	

MYC's Round the Bay Race

Course Y - A-K-C-D-S-G-A 22.5nm

Start & Finish @ A - Nye Ledge G11 'Reverse' Course RY - A-G-S-D-C-K-A



PRODUCT DIMENSIONS	
LENGTH	1.34
WIDTH	0.86
DEPTH	0.11
WEIGHT	1.11
AREA	0.11
VOLUME	0.11

0.2 n.miles

MYC's Round the Bay Race

Course Z - A-K-C-D-E-S-G-A 26.0nm

Start & Finish @ A - Nye Lege G "1"

'Reverse' Course RZ - A-G-S-E-D-C-K-A

